

REVATHI ELECTRONICS & CONTROLS

ITEM NO. : 4

**ITEM : TOP MOUNTED DISPLACER TYPE LEVEL SWITCH WITH GUIDE PIPE:
REFER OUR GENERAL ARRANGEMENT DRG. NO. RTMDLS-1001-WP.**

PRINCIPLE OF OPERATION :

Operation is based upon a buoyancy principle whereby a spring is loaded with weighted displacers which are heavier than the liquid under control. Immersion of the displacer in the liquid results in a buoyancy force change, producing a spring load reduction which moves the spring thereby actuating the magnetic switch which is kept inside the stem.

MATERIAL SPECIFICATION :

- | | | |
|---|---|---|
| 1. Service | : | To Mention |
| 2. Op Press $\text{kg/Cm}^2\text{g}$ / Temp ° C / Sp. Gr. | : | To Mention |
| 3. All wetted parts matl. | : | SS/PP/PVC/HDPE/PVDF/PTFE etc. |
| 4. No. Of Displacer | : | 1 / 2 / 3 / 4 Nos. (HIHI, HI, LO & LOLO) |
| 5. MOC of Spring | : | SS316 / Inconel / Monel / SS sleeved with PTFE |
| 6. MOC Multistrand wire rope | : | SS316 / PP/ SS sleeved with PTFE |
| 7. Mounting Flange | : | 4" ANSI 150# RF B 16.5 (OR) To Mention |
| 8. Connection Head | : | Cast Aluminium Weatherproof or Flameproof |
| 9. Cable Entry | : | 3/4" ET (F) STD |
| 10. Switch Differential | : | 60 - 80 mm Approx |
| 11. Guide Pipe perforated | : | Will be supplied as per the request. Recommended above 5 Mtrs. |
| 12. Repeatability | : | + 1% |
| 13. Measuring Range / Tank height | : | To Mention |
| 12. HI & LO actuation points
from bottom of the flange | : | To Mention |
| 13. Adjustable | : | The switches are adjustable over the entire stem length to have various level actuation points. |

DETAILS OF SEALED MAGNETIC SWITCH :

The basic switch used in all cases will be of imported origin and sealed type. The switch used is hermetically sealed inert gas filled magnetic switch with gold plated contacts of the following specifications.

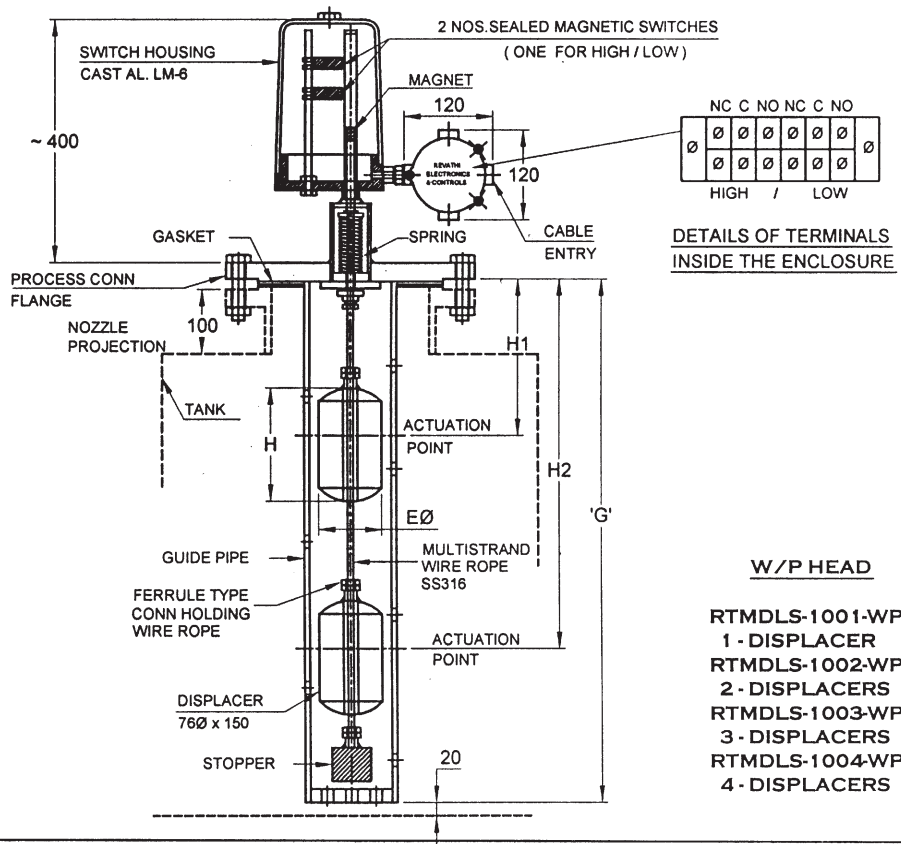
- | | | |
|-------------------------------|---|---|
| 1 Contact Rating / Form | : | 230 VAC 5 A (Surge) 60 W \ VA / 1 No. SPDT Micro / Reed.
Can directly operate 110/230 VAC Siemens or L&T size 1 contactor. |
| 2 Max. Initial Contact Rating | : | 1011 Ohms |
| 3 Min. Operate Time | : | 0.5 milli Second |
| 4 Min. Initial Contact Rating | : | 150 milli Ohms |
| 5 Life Expectancy | : | 100 million operations |

NOTE :

1. Flameproof enclosure is certificated by CMRS Dhanbad for Groups IIA, IIB as per IS- 2148-1981. the enclosure in addition is dust and vermin proof.
2. Flameproof enclosure for EEX-d T6 group could also be supplied for hazardous areas.

REVATHI ELECTRONICS & CONTROLS

TOP MOUNTED DISPLACER TYPE WEATHERPROOF LEVEL SWITCH



TOP MOUNTED DISPLACER TYPE FLAMERPROOF LEVEL SWITCH

